



Pearl House Parc Morrep, Praa Sands, TR20 9TE

£895,000 Freehold

CHRISTOPHERS
ESTATE AGENTS

Pearl House Parc Morrep

- BEAUTIFULLY PRESENTED DETACHED HOUSE
- FOUR BEDROOMS
- DOUBLE GARAGE & PARKING
- SOLAR PANELS AND AIR SOURCE HEAT PUMP
- VIEWS OVER OPEN COUNTRYSIDE & SEA GLIMPSES
- COUNCIL TAX BAND E
- FREEHOLD
- EPC - C78



An opportunity to purchase a beautifully presented, four double bedroom detached house with a landscaped garden, parking and double garage, in the sought after Cornish seaside village of Praa Sands.

Situated in a sought after area in an "off the beaten track" location is this four bedroom, detached house. The residence, which benefits from an air source heat pump central heating system, solar panels and double glazing, has been greatly enhanced by the current owners and enjoys views over open countryside and sea glimpses.

One enters the property on the first floor and, in brief, the accommodation comprises a galleried landing, utility room, shower room, lounge and, completing the first floor, a kitchen/diner. On the ground floor is a bathroom and four bedrooms, the master of which benefits from an en suite shower room.

To the outside is a beautifully maintained garden providing lawn areas, flower beds, plants and shrubs and many locations to sit back and enjoy the outlook towards open countryside. There is a greenhouse, barbecue area, useful shed, vegetable beds and an archway at the end of the garden frames the views towards open countryside. To the front is parking for a number of cars and a driveway leads to an integral garage.





Praa Sands is situated approximately midway between the towns of Helston and Penzance. It is famous for its long sandy beach and has a public house, restaurant and shops to cater for everyday needs. Close by is open countryside and both Helston and Penzance provide more comprehensive amenities including national stores, restaurants and leisure centres with indoor swimming pools. Penzance also benefits from mainline rail links to London Paddington from Penzance train station.

THE ACCOMMODATION COMPRISES (DIMENSIONS APPROX)

Steps up and door to hall.

HALL

One enters a galleried landing area with part Amtico flooring, skylight and a frosted window. There are doors to the integral garage, utility room and double doors to lounge.

LOUNGE 26' x 23'6" narrowing to 12'9" (7.92m x 7.16m narrowing to 3.89m)

A fabulous, large 'L' shaped room with two sets of French doors, one set opening on to a Juliette balcony and the other door opening on to a balcony area, enjoying the far reaching views over open countryside and sea glimpses over other properties.

Feature fireplace, which we are advised, is made from attractive Perla Beige marble and acts as a focal point for the room with hearth, surround and mantel over housing a Clearview wood burner. The room has Amtico flooring and is currently set up with surround sound speakers. Double doors to kitchen/diner.

KITCHEN/DINER 23'6" x 13' (7.16m x 3.96m)

A large open plan kitchen/diner which is triple aspect with views to open countryside and sea glimpses. A stylish modern kitchen comprising quartz working top surfaces incorporating a one and a half bowl sink unit with drainer, cupboards and drawers under and wall cupboards over. An array of built-in appliances include two ovens, under counter fridge and under counter freezer, induction hob with hood over and a dishwasher. The room has a Suburbia polished tiled floor. The kitchen benefits from a breakfast bar seating area.

UTILITY ROOM 7' x 6'6" (2.13m x 1.98m)

Providing storage with working top surfaces incorporating a ceramic sink unit with mixer tap over, cupboards and drawers under and wall cupboards over. There is space for a washing machine, tumble dryer and the room has a tiled floor. Door to shower room.

SHOWER ROOM

Comprising a shower cubicle, close coupled W.C. and a pedestal washbasin with mixer tap over. The room has a tiled floor, tiled walls and a frosted window.

STAIRS & LOWER HALL

With stairs from the galleried landing area descending to the lower hall with understairs cupboard which is utilised as an airing cupboard with water tank. There are doors to all bedrooms and door to bathroom.





BATHROOM

Attractive suite comprising a bath with mixer tap over, close coupled W.C., pedestal washbasin and a double shower cubicle. There are partially tiled walls, a tiled floor, towel rail and a frosted window. There is also a large ladder towel rail which can be heated independently when the central heating is switched off via a switch found in the master bedroom. The room benefits from under floor heating.

MASTER BEDROOM 11'9" x 10' plus desk area (3.58m x 3.05m plus desk area)

With double doors and window to the rear garden which provides views over open countryside. The room has an array of built-in wardrobes with mirrors and central dressing table. Door to en suite.

EN SUITE

An en suite shower room comprising close coupled W.C., shower cubicle and a washbasin with heated ladder towel rail which can run off the central heating and also independently operated via a switch in the master bedroom. There is a tiled floor, tiled walls and a frosted window.

BEDROOM TWO 12'9" x 12' plus door recess (3.89m x 3.66m plus door recess)

With outlook and double doors to the rear garden. An array of built-in wardrobes, drawers and a dressing table.

BEDROOM THREE 11'6" x 10' (3.51m x 3.05m)

With double doors to the rear garden and views to open countryside.

BEDROOM FOUR 12'9" x 9' (3.89m x 2.74m)

With outlook to the side.



OUTSIDE

The outside space is a real feature of the property with the highlight being the relatively level rear garden which is landscaped with an array of flowers, shrubs and an apple tree. There are lawn area, flower beds, raised vegetable beds, a greenhouse, good sized permanent barbecue. Wood store and a useful shed. An archway at the end of the garden frames the views over open countryside. An attractive fountain which we are advised is made from local stone and acts as a focal point for the garden area. To the front of the property is a stone chipped driveway which provides parking for a good number of vehicles and leads to the integral garage.

INTEGRAL GARAGE 19'6" x 19'3" (5.94m x 5.87m)

With up and over double garage door with both window and door to the outside. There is access to the loft and the room houses the header tank for the air source heat pump which we are advised was installed in October, 2024. The room also houses the LPG boiler as an alternative heating system. There are controls for the solar panels and we are advised that the panels are owned outright by the vendors. There is an electric garage door and the vendors also advise us that the loft space, which is accessed from this area, is boarded and has a light and loft ladder.

SERVICES

Mains electricity and water. Private drainage. Solar Panels and Air Source Heat Pump. Callor Gas back up heating system.









AGENTS NOTE ONE

We are advised that a neighboring property has applied for planning permission, further details can be found on the Cornwall Council planning portal using reference PA25/02030.

AGENTS NOTE TWO

We are advised that the property is approached via an unadopted road.

MOBILE AND BROADBAND

To check the broadband coverage for this property please visit -

<https://www.openreach.com/fibre-broadband>

To check the mobile phone coverage please visit -

<https://checker.ofcom.org.uk/>

COUNCIL TAX

Council Tax Band E.

ANTI-MONEY LAUNDERING

We are required by law to ask all purchasers for verified ID prior to instructing a sale

PROOF OF FINANCE - PURCHASERS

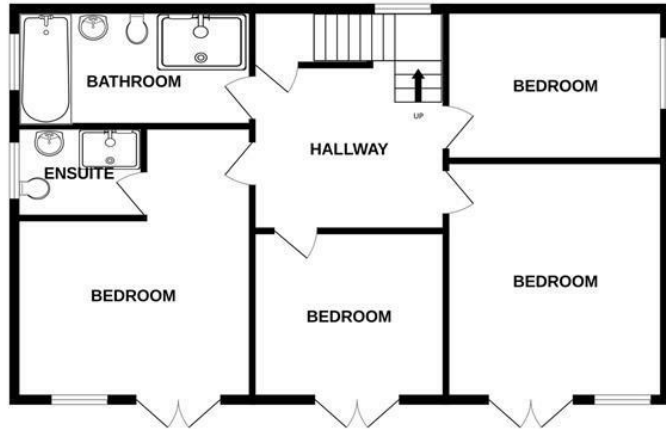
Prior to agreeing a sale, we will require proof of financial ability to purchase which will include an agreement in principle for a mortgage and/or proof of cash funds.

DATE DETAILS PREPARED

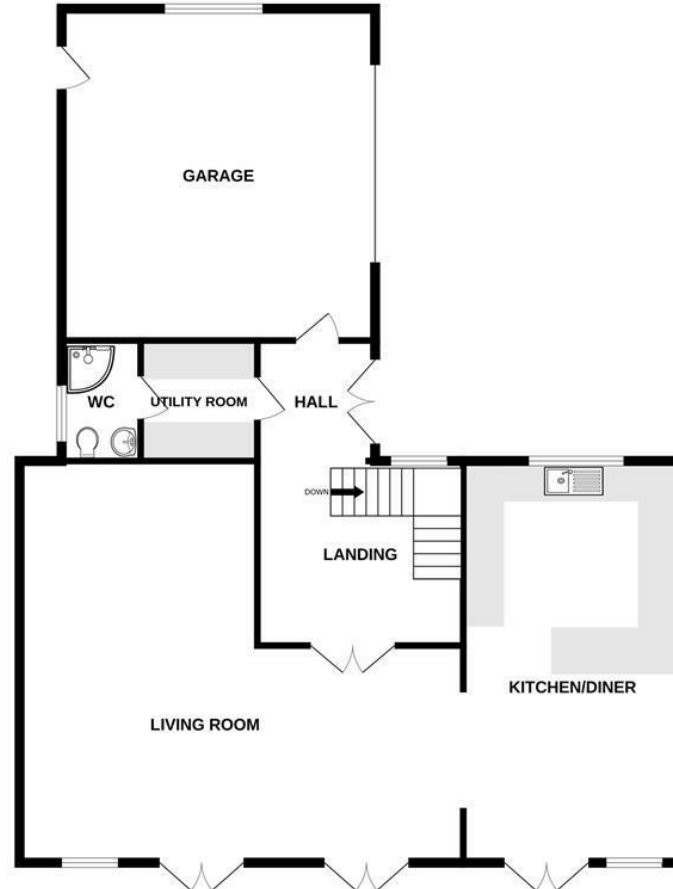
1st April, 2025.



GROUND FLOOR
877 sq.ft. (81.5 sq.m.) approx.



1ST FLOOR
1409 sq.ft. (130.9 sq.m.) approx.



TOTAL FLOOR AREA : 2286 sq.ft. (212.4 sq.m.) approx.

Whilst every attempt has been made to ensure the accuracy of the floorplan contained here, measurements of doors, windows, rooms and any other items are approximate and no responsibility is taken for any error, omission or mis-statement. This plan is for illustrative purposes only and should be used as such by any prospective purchaser. The services, systems and appliances shown have not been tested and no guarantee as to their operability or efficiency can be given.

Made with Metropix ©2025



Energy Efficiency Rating		
	Current	Potential
Very energy efficient - lower running costs		
(92 plus) A		
(81-91) B		
(69-80) C	78	80
(55-68) D		
(39-54) E		
(21-38) F		
(1-20) G		
Not energy efficient - higher running costs		
England & Wales	EU Directive 2002/91/EC	

These particulars are set out as a general outline in accordance with the Property Misdescriptions Act (1991) only for the guidance of intending purchasers or lessees, and do not constitute any part of an offer or contract. Details are given without any responsibility, and any intending purchasers, lessees or third parties should not rely on them as statements or representations of fact, but must satisfy themselves by inspection or otherwise as to the correctness of each of them. We have not carried out a structural survey and the services, appliances and specific fittings have not been tested. All photographs, measurements, floor plans and distances referred to are given as a guide only and should not be relied upon for the purchase of carpets or any other fixtures or fittings. Gardens, roof terraces, balconies and communal gardens as well as tenure and lease details cannot have their accuracy guaranteed for intending purchasers. Lease details, service ground rent (where applicable) are given as a guide only and should be checked and confirmed by your solicitor prior to exchange of contracts.



Christophers Estate Agents

5 Wendron Street, Helston, TR13 8PT

01326 565566 | property@christophers.uk.com | christophers.uk.com

CHRISTOPHERS
ESTATE AGENTS